

EMGworks[®] Installation Guide

**May 2008 Edition
PM-E05**

Copyright © 2008 by Delsys Incorporated

Specifications and procedures outlined in this document are subject to change without notice.

Delsys Logo, EMGworks, and Myomonitor are Registered Trademarks of Delsys Incorporated.

MAN-009-1-1

Introduction

Thank you for purchasing EMGworks Data Acquisition and Analysis Software. This document contains important information for installing the software and its associated hardware. Please note that EMGworks is compatible only with Microsoft Windows XP® and Microsoft Windows Vista.®

Minimum System Requirements

- Windows XP with Service Pack 2 or Windows Vista Home Premium, Business, or Ultimate
- 1 GHz processor
- 1 GB system memory
- 1 GB free hard disk space
- 1024x768 (XGA) display resolution
- Any computer carrying the “Windows Vista Premium Ready PC” logo meets these requirements and can run EMGworks
- Alternatively, an Windows Vista System with an “Experience Index of 3.0 or greater

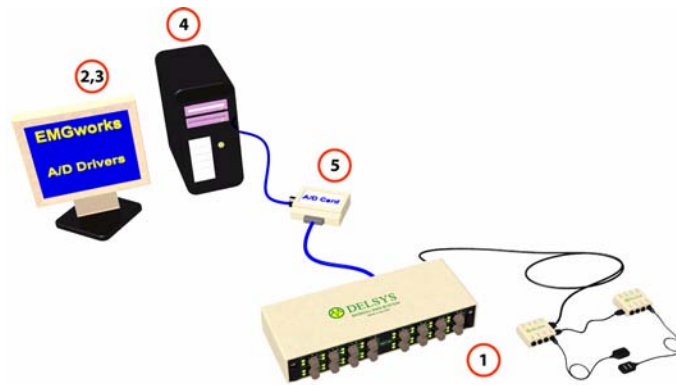
Recommended Requirements for Optimal Performance

- Multi-core processor, at 1GHz or more.
- 128 MB video memory
- 2 GB system memory
- 1GB free hard disk space.
- Dual Monitor with 1280x1024 (SXGA) display resolution or better
- Alternatively any Windows Vista System with an Experience Index of 4.0 or greater.

Installation Scenarios

There are three typical installation scenarios. It is necessary to choose the appropriate scenario before proceeding:

1. Installation for a Bagnoli EMG System



1	Bagnoli EMG System	4	PC (desktop or laptop)
2	EMGworks Acquisition & Analysis Software	5	NI A/D Card
3	NI Driver for A/D Card		

In this configuration a Bagnoli EMG System is operated with EMGworks software installed on a PC. This scenario requires the installation of a data acquisition device (A/D card) prior to the installation of EMGworks. See the next section in this manual named “Installing the Data Acquisition Device” for instructions prior to installing the EMGworks software.

2. Installation for a Myomonitor EMG System



1	Myomonitor EMG System	6	D-Link Software Drivers
2	EMGworks Wireless Software for handheld PC	7	EMGworks Acquisition & Analysis Software
3	Wireless Transmission	8	NI drivers for optional Trigger Module
4	Host Computer	9	Optional Wireless Trigger Module
5	D-Link USB Receiver		



This scenario requires the installation and configuration of a wireless network. Refer to the **Myomonitor IV EMG System Installation Guide** for important information, prior to installing the EMGworks software. Skip the next section in this manual named “Installing the Data Acquisition Device”.

3. Installation for Demonstration Purposes

This scenario allows the user to try EMGworks for a maximum of 30 days without any hardware installed. Skip the next section in this manual named “Installing the Data Acquisition Device”.

Installing the Data Acquisition Device

The installation of EMGworks for a Bagnoli EMG System requires the installation of a National Instruments data acquisition device first. If EMGworks is being installed for a Myomonitor EMG System or for demonstration purposes, please skip this section.



Consult the documentation provided with the National Instruments data acquisition device for software and hardware installation instructions.



The National Instruments software and drivers must be installed prior to installing or connecting the data acquisition device.



If EMGworks is being used with a National Instruments E-series data acquisition device, the National Instruments Traditional Legacy Drivers must be installed.



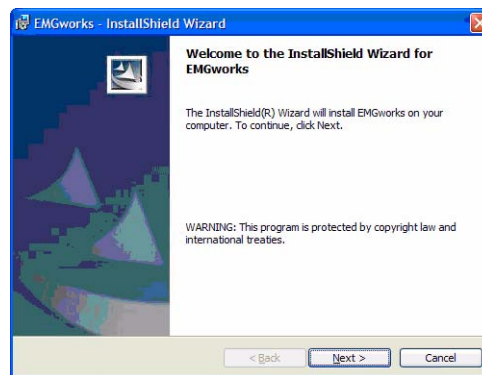
If EMGworks is being used with a National Instruments M-series data acquisition device, the National Instruments NI-DAQmx Drivers must be installed.



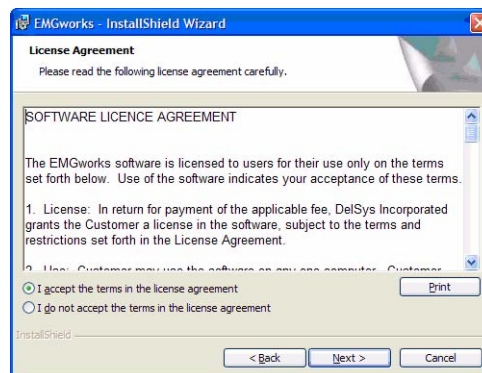
Once the data acquisition device is installed, verify that it is operating correctly before running EMGworks. This is done by running the Test Panels as described in the National Instruments documentation. An error will be generated when data acquisition is started in EMGworks if the device is not operating correctly.

Installing the EMGworks® Software

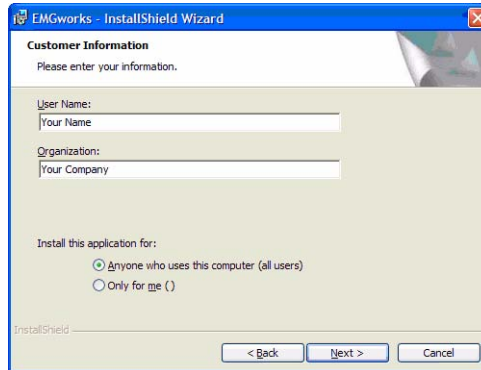
1. Insert the Delsys Software CD into the computer. If you do not see the EMGworks install screen when you insert the CD, go to the Windows Start menu and select Run. Type x:\setup.exe (x is the letter of the CD-ROM drive) and press enter to start the installation program. If the EMGworks installation program was downloaded from the Internet, the downloaded file must be double-clicked to start the installation program.



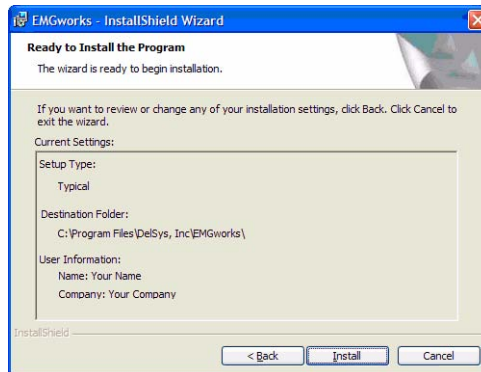
2. The Installation program will start and show the **Welcome** dialog box. Click **Next** to continue.



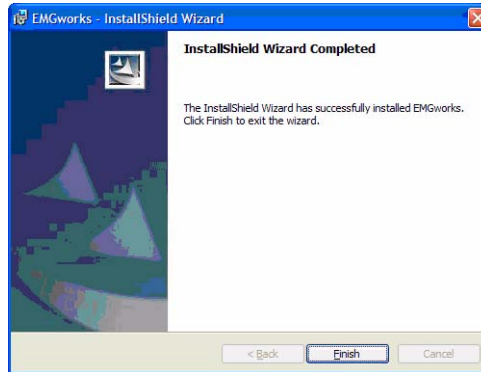
3. The **License Agreement** dialog box will appear. If you agree to the terms of the license agreement, select “I accept the terms in the license agreement” and click **Next**.



4. The **Customer Information** dialog box will appear. Type your Name and Organization in the corresponding text boxes and click **Next**.

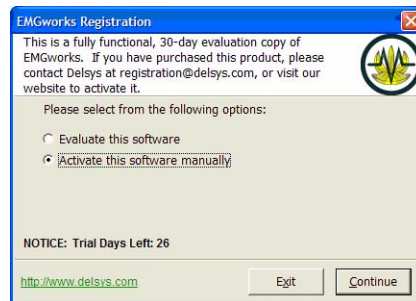


5. Review the specified installation settings and click **Install** to continue or **Back** to make any modifications.



6. The **Installation Wizard Completed** dialog box will appear when all of the components of EMGworks are installed. Click **Finish** to complete the installation.

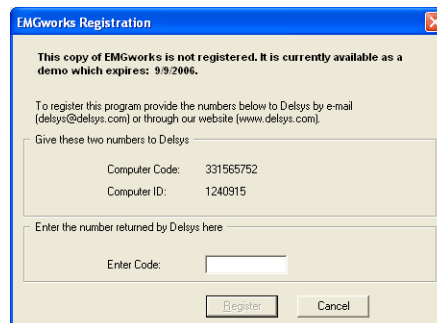
Using EMGworks for the First Time



When EMGworks Acquisition or EMGworks Analysis is operated for the first time, the **EMGworks Registration** dialog box will appear.

In all cases, the program is available as a fully functional 30-day demo. If you have not purchased EMGworks, choose “Evaluate this software” and click the **Continue** button to run the program in un-registered demo mode. This screen will appear every time that EMGworks is run. After the 30-day demo period expires, the program will be disabled. The program can be reactivated by purchasing a licence and registering the software with Delsys.

Users who have purchased the software should register the program within the 30-day demo period. To register the program, choose “Activate this software manually” and click **Continue**.



The **Registration** dialog box displaying the Computer Code and Computer ID will appear. Visit the EMGworks section at www.delsys.com to register the program. Typically, Delsys will issue an activation code within 48 hours. While waiting for the code, the program can be run in the un-registered demo mode.

When the activation code is received, enter it in the **Enter code** field and click **Register**. EMGworks will start and the registration screen will no longer appear each time the program is started.



Please refer to the “EMGworks User’s Guide” for full details on the use of EMGworks.

-

