



Release Notes - Myomonitor[®] III Datalogger EMG System

April 22, 2005

Copyright © 2005, Delsys Incorporated. Specifications and procedures outlined in this manual are subject to change without notice. Delsys Logo, EMGworks, and Myomonitor are Registered Trademarks of Delsys Incorporated.

Thank you for purchasing Myomonitor[®] III Datalogger EMG System. These notes contain information you must know before starting. They explain how to install the software and the associated hardware. For additional information, please refer to the User Manual that came with the system.

Before you get started, be sure to install the EMGworks program that came with your system.

The steps outlined in these notes are:

- Acquire data with the Myomonitor.
- Transfer data from the Myomonitor to the the host computer for Analysis.

SYSTEM REQUIREMENTS

Minimal System Requirements:

- IBM or 100% compatible system with an Intel Pentium II 400 MHz processor or better
- Microsoft Windows 2000, or Windows XP with Internet Explorer version 5.01 or greater installed
- Sufficient hard disk space to install and run the products, at least 200 MB
- 128 MB RAM memory
- 1 free USB slot
- EMGworks 3.1 or greater installed.

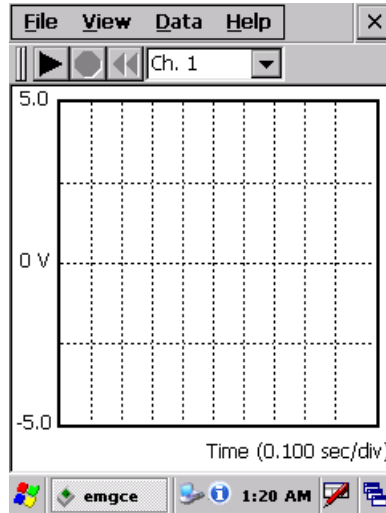
Recommended System Requirements

- IBM or 100% compatible system with an Intel Pentium III 1 GHz processor or better
- Microsoft Windows 2000, Windows XP

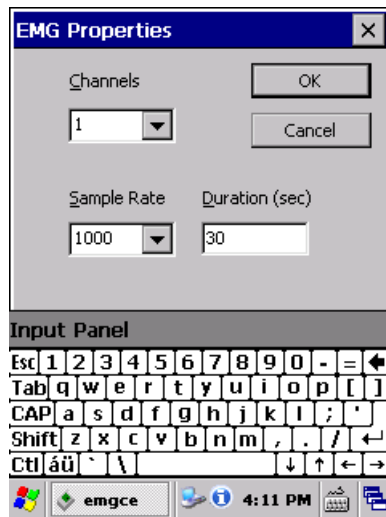
- Sufficient hard disk space to install and run the products, at least 500 MB
- 128 MB RAM memory
- 1 free USB slot

Acquire Data with the Myomonitor III Datalogger

1. Start the datalogger by double tapping the “EMGworks Datalogger” icon on the Myomonitor III desktop.

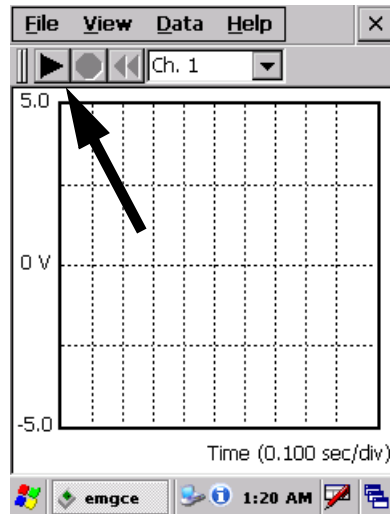


2. Tap “Data” and then “Properties” to open up the test setup dialog.

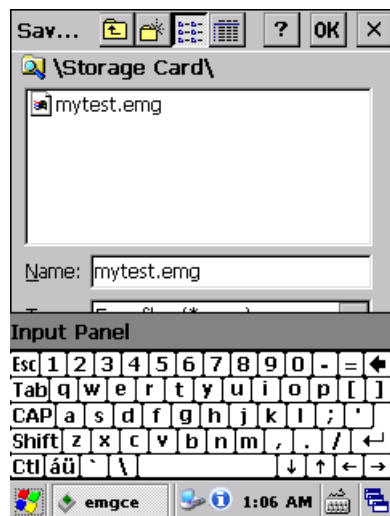


3. Select the desired number of channels, sample rate and duration. Tap “OK”. In the example above one channel is sampled at 1000Hz for 30 seconds.
4. Connect the electrodes to the input module and the input module to the Myomonitor III (for a comprehensive description refer to the User Manual).

5. Tap the “play” recording control to start acquisition.



6. When the data acquisition is done, the file needs to be saved. Select “Save” from the “File” menu.



7. Double tap the “Storage Card” folder, enter “mytest.emg” in the “Name” field and tap “OK” to save the file. After saving the file, click the “X” in the top right corner of the screen to close the program.

Transferring Data to the Host Computer

Installing ActiveSync

Microsoft ActiveSync connects a host computer and a handheld device and enables them to exchange files and other types of information. To install the software on the Windows host computer:

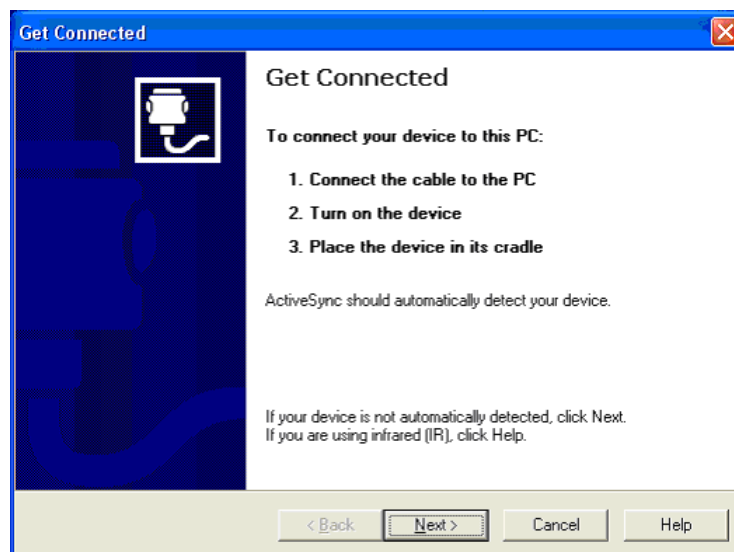
1. Insert the CD labeled "EMGworks". Browse to "ActiveSync" folder and execute the "MSASYNC.EXE" program. This will start the ActiveSync installation.



2. Click "Next" and "Next" again. This will copy all the necessary files to the host computer and install ActiveSync.

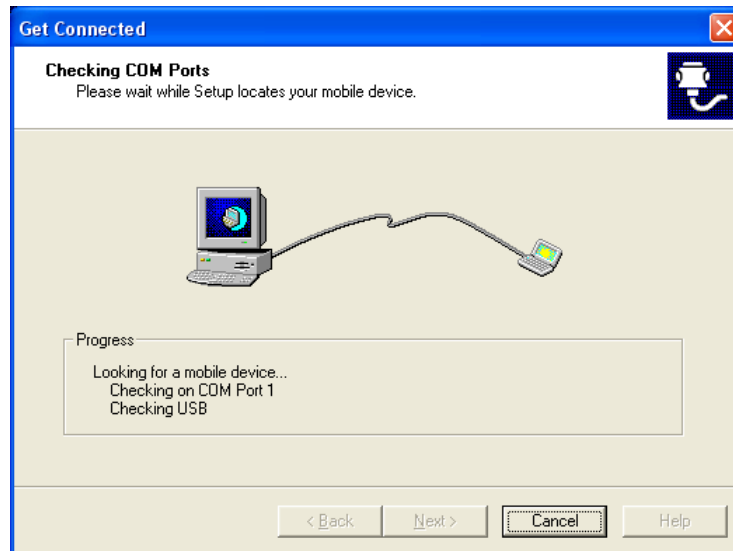
Getting connected

ActiveSync will automatically display the “Get Connected” wizard to establish a connection between the host computer and the Myomonitor III.

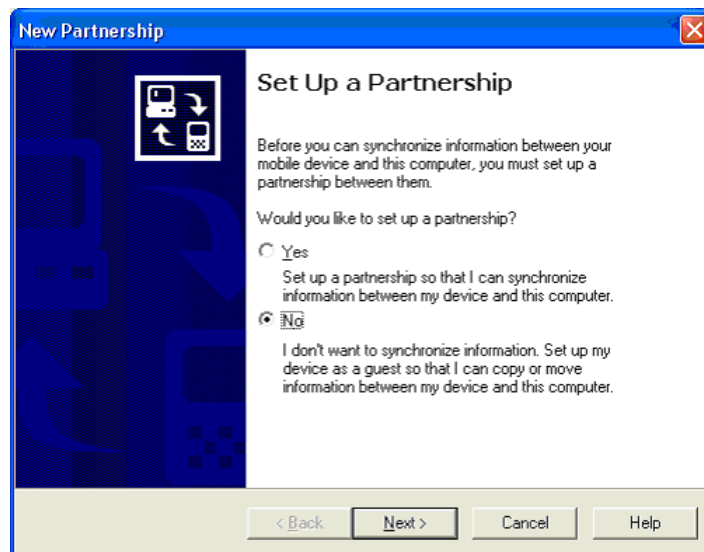


Before proceeding, make sure the Myomonitor III has been connected to the host computer with the USB cable that shipped with the system. See the user manual for additional information.

1. ActiveSync will automatically start searching for the device. If not, click "Next" to make ActiveSync search for the Myomonitor III.



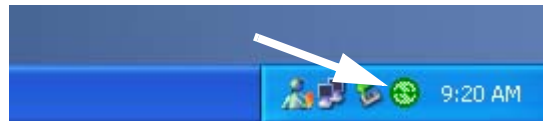
If a connection was successfully established, the screen shown below will appear.



2. Select "No" and click "Next".

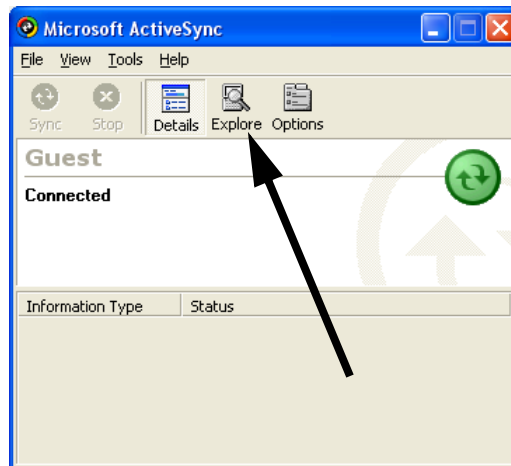


The Myomonitor III and host computer are now connected. A green symbol becomes visible in the system notification area.

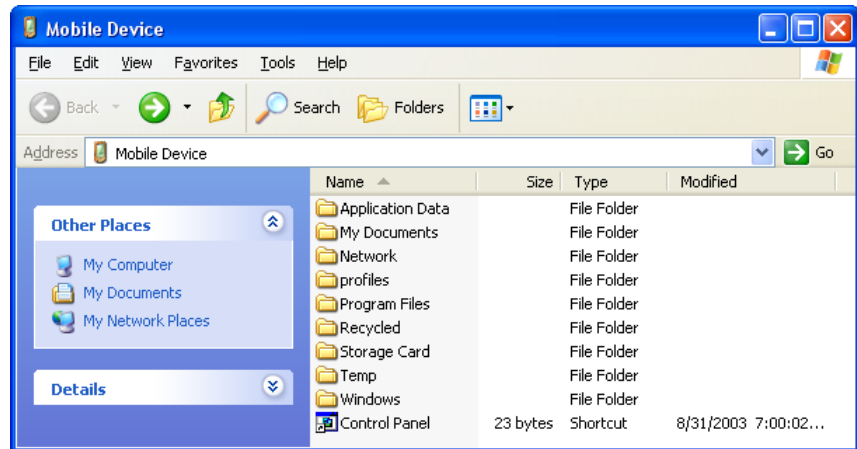


Transferring the file to the host computer

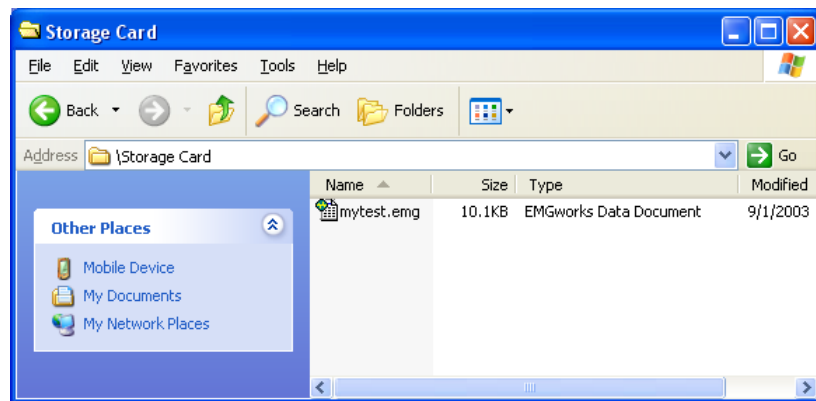
1. Double click the green ActiveSync icon in the system notification area.



2. Press the “Explorer” button to display the Myomonitor III file system.

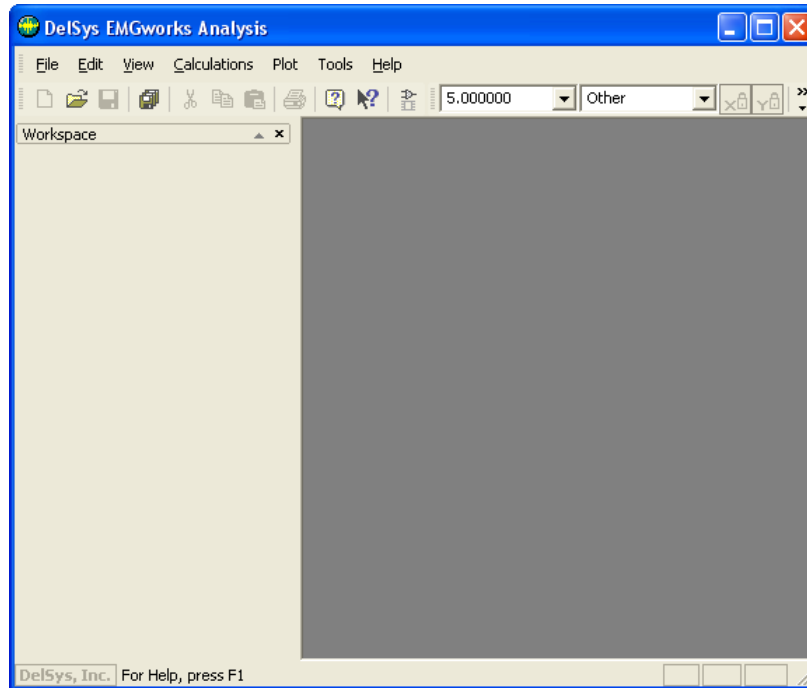


3. Double click the “Storage Card” folder and from the “Storage Card” folder, copy the file “mytest.emg” to a location on the host computer.

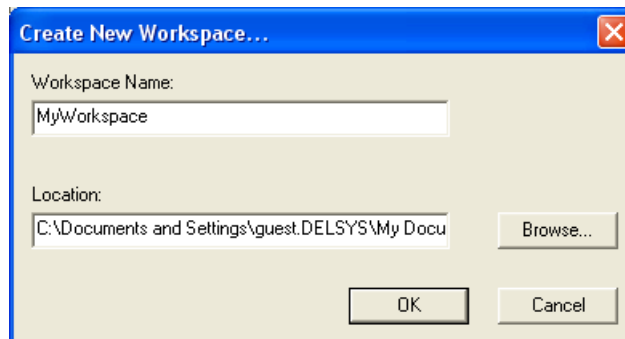


Opening the Data in EMGworks Analysis

1. Open EMGworks Analysis by double clicking on the “EMGworks Analysis” icon on the desktop.

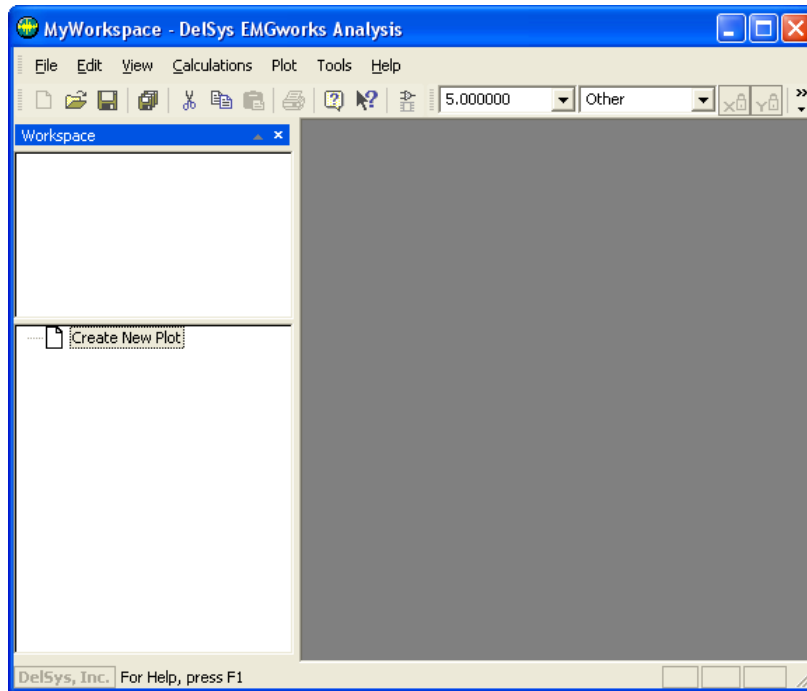


2. If this is the first time EMGworks Analysis is run, create a new workspace by selecting “New Workspace” from the “File” menu and enter a workspace name. If this is not the first time EMGworks is run, the last opened workspace will be opened automatically.

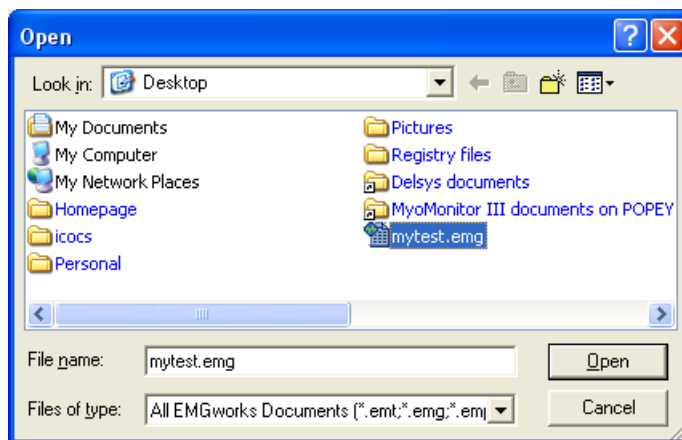


Click “OK”.

3. A workspace is now opened and appears as a white area to the left. Add a file to the workspace by clicking with the right mouse button in the white blank area to the left and select “Add file to workspace”.

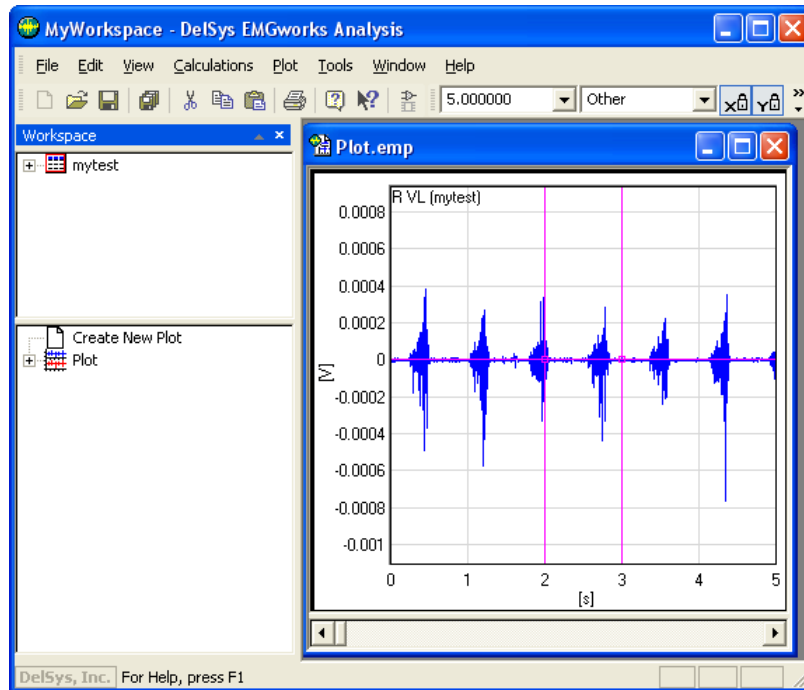


4. Browse to the folder where the “mytest.emg” is located on the host computer. Select “mytest.emg”.



Click “Open” to open the file.

5. The file has now been added to the workspace. To view the file, right click on it once in the workspace and select “Plot” from the pop-up menu.



Technical Support

Visit our web site at:
<http://www.delsys.com>
Tel: (617) 236-0599
Fax: (617) 236-0549